
EXECUTIVE SUMMARY REPORT

OSD – Forest Edge Elementary School

March 27th, 2020

What's New?

Forest Edge Elementary School continues to make great achievements! On the 2nd level, carpeting is finished, with cabinets and flooring following close after. The wood look ceiling in the resource area has also started. Marker boards and doors are mostly installed on both levels.

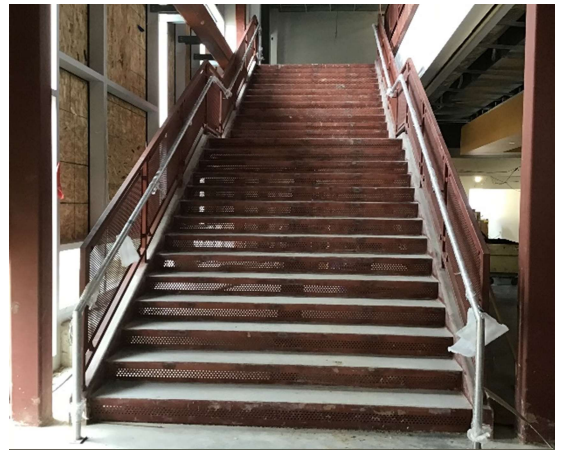
On the 1st floor, ceiling tile is dropping at a steady pace, and final touches to paint are going on. The last of the drywall is being installed in the cafeteria area. Basketball hoops have been installed in the gym as well as divider curtains and other gym equipment. Handrails have been welded in place in each staircase, and soon, bathrooms will see floor and wall tiles. Geothermal drilling continues to bore holes in the geothermal field, and soon solar panels will be installed on the roof. CeraClad fiber cement panels are completely installed, with the Zinc panels getting started. All safety precautions are taken seriously to ensure workers remain healthy during the COVID-19 situation.

The Past Weeks

- Gym equipment installation
- Stairwell handrails
- Geothermal Drilling
- Cabinets and countertops on Level 2

Coming Up in the Weeks Ahead

- Carpeting on Level 1 classrooms
- Floor and wall tile in Level 2 bathrooms
- Drywall in Cafeteria



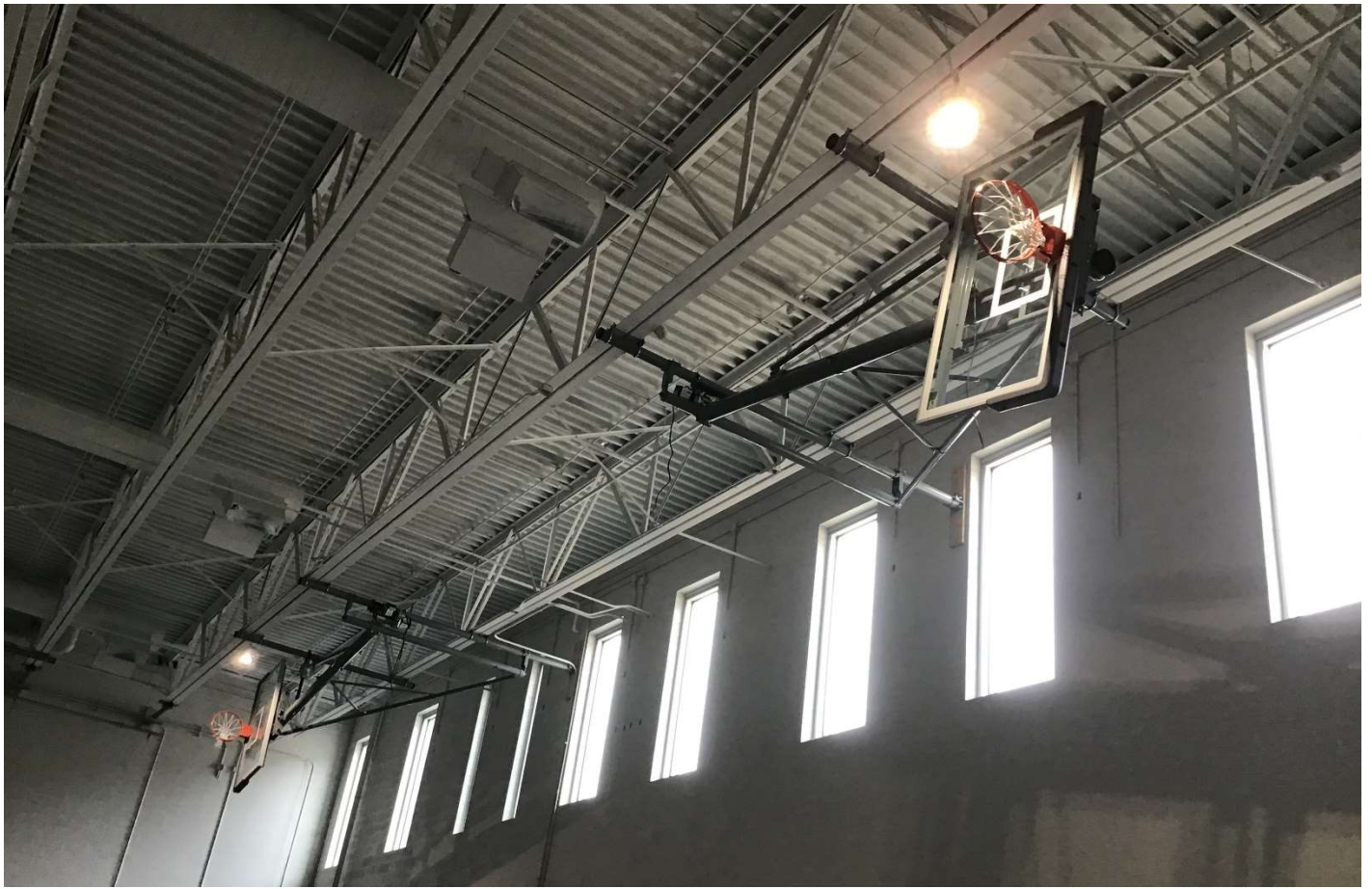
Stairwell Now with Handrailing



Drywall Progress in the Cafeteria



Did you know? Since the first of the new year, the electrical crew has laid more than 40,000 linear feet of conduit. That's farther than going from Oregon Forest Edge Elementary to the Capitol and back!



Basketball Hoops Now Installed in the Gym!



Cabinets in a Work Area on Level 2